



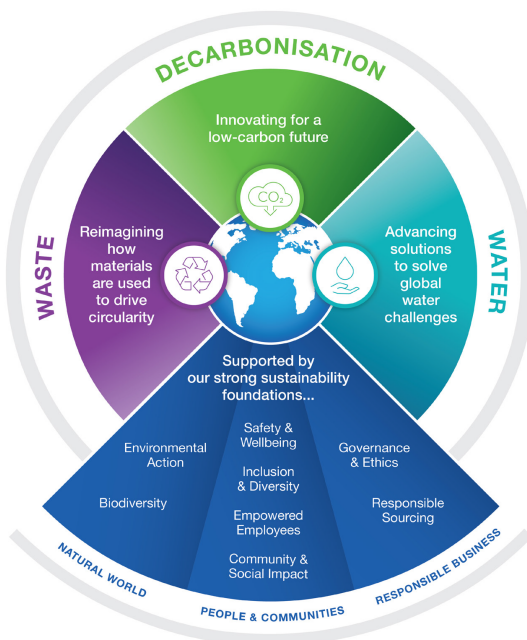
# Sustainability Factsheet 2023

## Solutions for a sustainable future

At CRH, we recognise the need to change what is built and how we build it, as well as driving improvements in the sustainability of our own business and industry. We are committed to accelerating the delivery of sustainable solutions for our customers, to build, connect and improve our world, both now and in the future.

### Our sustainability framework

Our new sustainability framework identifies three rapidly emerging and hard to solve global challenges for the built environment and society - decarbonisation, waste and water.



At CRH, we are designing our products, services and solutions to help solve these three global challenges and to create a more sustainable built environment. In addition, we are building on our strong sustainability foundations to protect the natural world, help our people and communities to thrive and stand out as a responsible business.

### Our targets and ambitions

We are driven by our ambitious targets which support both the UN's Sustainable Development Goals and the Paris Agreement, evidenced by our 2050 net zero ambition and SBTi validation of our 2030 carbon emissions reduction targets in line with the updated 1.5°C science-based framework. Through a continued focus on innovation, research and development, and stakeholder engagement, we are making good progress across our targets, which include:

30%

reduction in absolute group-wide carbon emissions by 2030 (on a 2021 base year)

50%

product revenue from products with enhanced sustainability attributes by 2025

33%

women in senior management by 2030

Zero

fatalities in any year

### Creating value

#### Better built environment

We are accelerating investment in innovation to develop solutions that enable a higher-performing and more sustainable built environment for our communities.

#### Delivering low-carbon solutions

By increasing our use of lower carbon fuels, clean electricity and recycling materials, we are delivering the low-carbon products and solutions needed to decarbonise the built environment, construct energy efficient buildings and create clean energy infrastructure.

#### Accelerating the circular economy

CRH is a significant contributor to the circular economy. We are the largest recycler of building materials in North America, with approximately 25% of every mile of road we build being made from recycled materials, helping to preserve natural resources.

#### Solving global water challenges

From designing and installing storm water management solutions, to providing systems to capture, treat and distribute water resources, we are playing an important role in helping communities solve water challenges.

#### Driving excellence in safety

Our materials and products help our customers to build safer, cleaner, quicker and better, prolonging the life-cycle of buildings and providing end-of-life solutions.

#### Enhancing biodiversity

From nature reserves, to parks and wildlife sanctuaries, by managing and rehabilitating our land we can create positive outcomes for communities and the natural world. We are also helping to green our cities by introducing biodiversity into the urban landscape.



For more information on our sustainability framework and targets, see our 2022 Sustainability Performance Report, available on [crh.com](https://www.crh.com).



# Sustainability Factsheet 2023

## Our 2022 performance

In 2022, we continued to make progress in decarbonising our business, innovating to improve circularity and preserve resources, advancing climate resilience in the built environment and strengthening our inclusive and diverse culture.



<sup>1</sup> This includes our Scope 1 and Scope 2 absolute carbon emissions

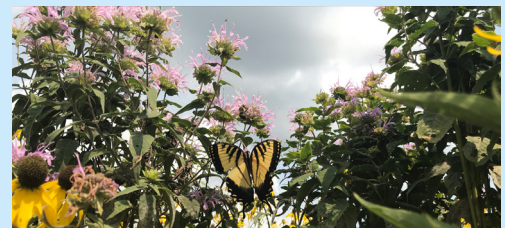
## Sustainability in action



Circularity is embedded within our business, processes and products. We utilise waste and by-products from other industries as raw materials and fuels to create value-added, quality products that have a lower impact on our world. For example, Staker Parson Materials & Construction, part of CRH Americas, is using an innovative recycling effort that involves avoiding the disposal of large amounts of waste materials by using them as a recycled road-base, in the construction of the West Davis Corridor.



The CRH Global Frontline Leadership Programme is a key enabler of our commitment to develop future leaders, providing training to over 10,000 frontline leaders and their managers across 25 countries worldwide, including modules on inclusion and diversity, safety and resilience.



Since 2004, CRH Americas has partnered with the Wildlife Habitat Council (WHC), a non-profit group that collaborates with corporations to advance biodiversity and sustainability. In 2022, several of our businesses across the Group received awards from independent bodies (such as the WHC) for their conservation initiatives, which included creating habitats such as wetlands and pollinator gardens for biodiversity, removing invasive species and allowing the regeneration of native trees at our sites.

## Our sustainability recognitions



For more details on our sustainability performance please visit [www.crh.com/sustainability](http://www.crh.com/sustainability)

Eunice Heath Chief Sustainability Officer

(The use by CRH public limited company of any MSCI ESG Research LLC or its affiliates ("MSCI") Data, and the use of MSCI logos, trademarks, service marks or index names herein, do not constitute a sponsorship, endorsement, recommendation or promotion of CRH public limited company by MSCI. MSCI services and data are the property of MSCI or its information providers, and are provided 'as is' and without warranty. MSCI names and logos are trademarks or service marks of MSCI.)

Copyright ©2023 Morningstar Sustainability. All rights reserved. This Report contains information developed by Sustainability (www.sustainability.com). Such information and data are proprietary of Sustainability and/or its third party suppliers (Third Party Data) and are provided for informational purposes only. They do not constitute an endorsement of any product or project, nor an investment advice and are not warranted to be complete, timely, accurate or suitable for a particular purpose. Their use is subject to conditions available at <https://www.sustainability.com/legal-disclaimers>